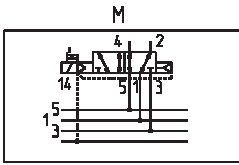


ESEMPIO DI CODIFICA ELETTROVALVOLE

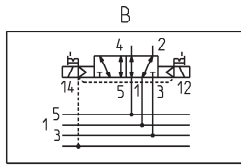
D	1	E	VC	-	M	P
D	SERIE					
1	PASSO 1 = 10,5 mm					
E	VERSIONE E = Elettrovalvola					
VC	COMPONENTE VC = Valvola plugin					
M	TIPO DI ELETTROVALVOLA M = 5/2 Monostabile B = 5/2 Bistabile C = 2 x 3/2 NC A = 2 x 3/2 NO			G = 2 x 3/2 (NC+NO) V = 5/3 CC K = 5/3 CO N = 5/3 CP		
P	AZIONAMENTO MANUALE P = Azionamento a pressione R = Azionamento a pressione con dispositivo di ritenuta					

ISOLE DI VALVOLE SERIE D1

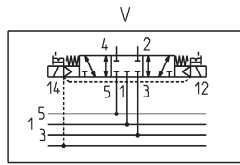
FUNZIONI DISPONIBILI - SIMBOLI ELETTROVALVOLE



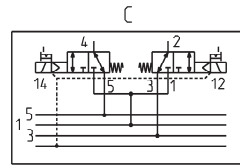
M = 5/2 Monostabile



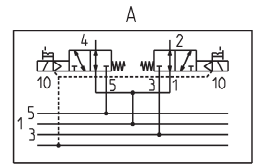
B = 5/2 Bistabile



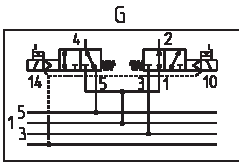
V = 5/3 Centri Chiusi



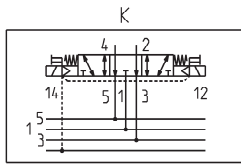
C = 2 x 3/2 NC



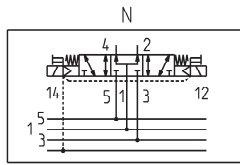
A = 2 x 3/2 NO



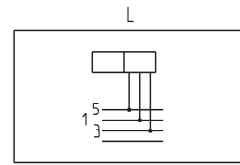
G = 1 x 3/2 NC +
1 x 3/2 NO



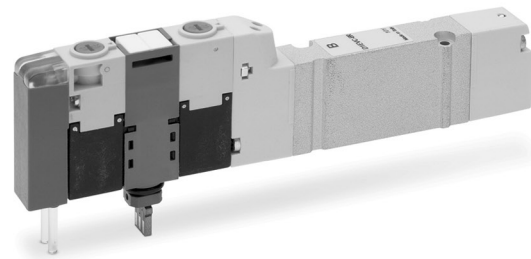
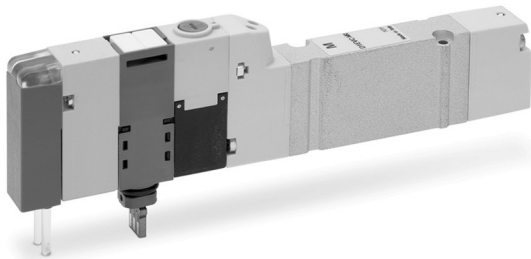
K = 5/3 CO



N = 5/3 CP

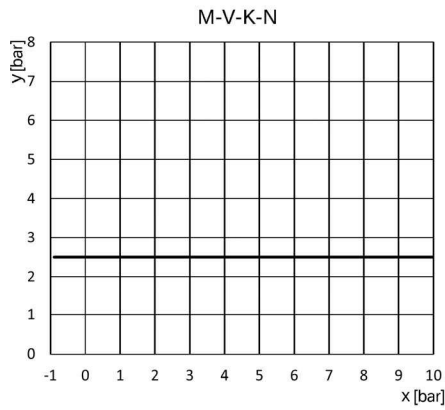


L = posizione libera



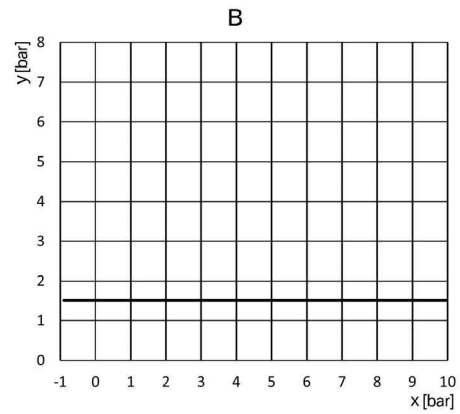
GRAFICI PER PRESSIONE PILOTAGGIO ESTERNO

Modello di valvola



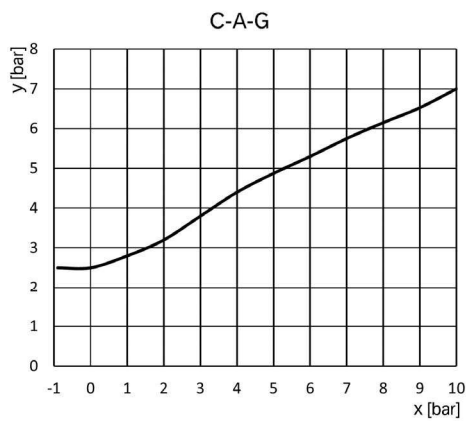
x = Pressione alimentazione
y = Pressione pilotaggio

Modello di valvola



x = Pressione alimentazione
y = Pressione pilotaggio

Modello di valvola



x = Pressione alimentazione
y = Pressione pilotaggio